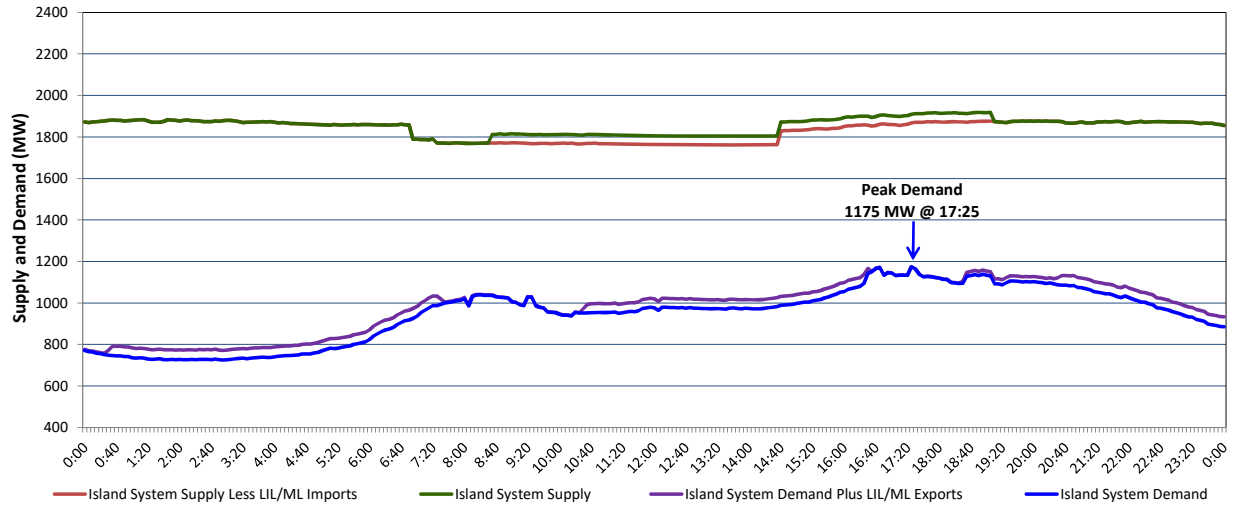


**Newfoundland Labrador Hydro (NLH)
Supply and Demand Status Report Filed Wednesday, December 09, 2020**

**Section 1
Island Interconnected System Supply, Demand & Exports
Actual 24 Hour System Performance For Tuesday, December 08, 2020**



Supply Notes For December 08, 2020

- 1,2
A As of 1520 hours, December 7, 2020, Holyrood Unit 2 available but not operating (170 MW).
B At 0651 hours, December 8, 2020, CAT Arm Unit 1 unavailable due to planned outage (67 MW).
C At 1436 hours, December 8, 2020, CAT Arm Unit 1 available (67 MW).

**Section 2
Island Interconnected Supply and Demand**

Wed, Dec 09, 2020	Island System Outlook ³	Seven-Day Forecast	Temperature (°C)		Island System Daily Peak Demand (MW)	
			Morning	Evening	Forecast	Adjusted ⁷
Available Island System Supply: ⁵	1,870 MW	Wednesday, December 9, 2020	3	3	1,365	1,261
NLH Island Generation: ⁴	1,525 MW	Thursday, December 10, 2020	2	1	1,270	1,167
NLH Island Power Purchases: ⁶	105 MW	Friday, December 11, 2020	-1	0	1,275	1,172
Other Island Generation:	240 MW	Saturday, December 12, 2020	-1	-1	1,255	1,152
ML/LIL Imports:	- MW	Sunday, December 13, 2020	-1	0	1,325	1,222
Current St. John's Temperature & Windchill:	2	Monday, December 14, 2020	5	3	1,225	1,123
7-Day Island Peak Demand Forecast:	1,365 MW	Tuesday, December 15, 2020	6	4	1,170	1,068

Supply Notes For December 09, 2020

- Notes:
1. Generation outages for running and corrective maintenance are included. These are not unusual for power system operations. They generally do not impact customer supply. The power system operators schedule outages to system equipment whenever possible to coincide with periods when customer demands are low and sufficient supply reserves are available. However, from time to time equipment outages are necessary and reserves may be impacted.
 2. Due to the Island system having no synchronous connections to the larger North American grid, when there is a sudden loss of large generating units there may be a requirement for some customer's load to be interrupted for short periods to bring generation output equal to customer demand. This automatic action of power system protection, referred to as under frequency load shedding (UFLS), is necessary to ensure the integrity and reliability of system equipment. Under frequency events have typically occurred 5 to 8 times per year on the Island Interconnected System and the resultant customer load interruptions are generally less than 30 minutes. With the activation of the Maritime Link frequency controller during the winter of 2018, UFLS events have occurred less frequently.
 3. As of 0800 Hours.
 4. Gross output including station service at Holyrood (24.5 MW) and improved NLH hydraulic output due to water levels (35 MW).
 5. Gross output from all Island sources (including Note 4).
 6. NLH Island Power Purchases include: CBPP Co-Gen, Nalcor Exploits, Rattle Brook, Star Lake, Wind Generation and capacity assistance (when applicable).
 7. Adjusted for curtailable load, market activities and the impact of voltage reduction when applicable.

**Section 3
Island Peak Demand Information
Previous Day Actual Peak and Current Day Forecast Peak**

Tue, Dec 08, 2020	Actual Island Peak Demand ⁸	17:25	1,175 MW
Wed, Dec 09, 2020	Forecast Island Peak Demand		1,365 MW

- Notes: 8. Island Demand / LIL / ML Exports (where applicable) is supplied by NLH generation and purchases, plus generation owned and operated by Newfoundland Power and Corner Brook Pulp & Paper (Deer Lake Power, DLP).